

PERMANENT PACEMAKER (PPM) IMPLANTATION



Contents

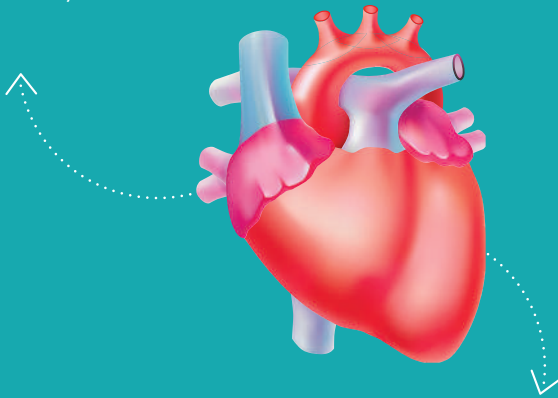
- 01 **What Is A Pacemaker?** Pg 4
- 02 **Why Do I Need To Have A Permanent Pacemaker (PPM)?** Pg 5
 - What Do I Need To Know About The Device?** Pg 5
- 03 **Patient's Journey** Pg 6
- 04 **Take Home Message** Pg 9
- 05 **My Journey** Pg 10 - 14



01

What Is A Pacemaker?

It is a medical device implanted in the chest or abdomen to regulate the heart's rhythm. It is used to treat certain heart conditions that cause abnormal heartbeats or bradycardia (slow heart rate).



The pacemaker consists of a small generator (containing a battery and electronic circuits) and one or more leads (thin wires) that are threaded through the veins into the heart.



Learn more from the
American Heart Association
(AHA)

02

Why Do I Need To Have A Permanent Pacemaker (PPM)?

It is recommended for conditions such as slow heart rate or irregular heart rate and certain types of heart failure.

What Do I Need To Know About The Device?



- It is implanted through a minor surgical procedure placed under the skin near the collarbone.
- The procedure is generally well-tolerated, and patients may receive local anaesthesia or sedation.
- The pacemaker continuously monitors the heart's electrical activity.
- If it detects an abnormal rhythm or if the heart rate falls below a set threshold, it sends electrical signals to the heart to pace it at the appropriate rate.
- The battery within the pacemaker has a limited lifespan, typically ranging from 5 to 15 years, depending on usage.

03

Patient's Journey

Before Admission



- You will be admitted to the ward a day before or on the procedure day.



- You may require blood investigations.

On Procedure Day



- Your doctor does a daily routine assessment.
- Your informed consent will be obtained. You may ask any questions you may have.



- Hair on the chest area is removed.
- You are instructed not to eat or drink for a certain period before the procedure, usually starting the night before the procedure or at least 6 hours prior to the procedure.



- Our staff will transfer you to the Cardiac Catheterisation Lab.

During The Procedure



- The procedure is often done under sedation.
- A small incision is made on the left or right side of the chest near the collarbone. The exact location may vary based on the patient's anatomy and the type of pacemaker being implanted.



- A small pocket is created under the skin to hold the pacemaker generator.



- The incision is closed with stitches or surgical staples. The wound is small, and scarring is often discreet.

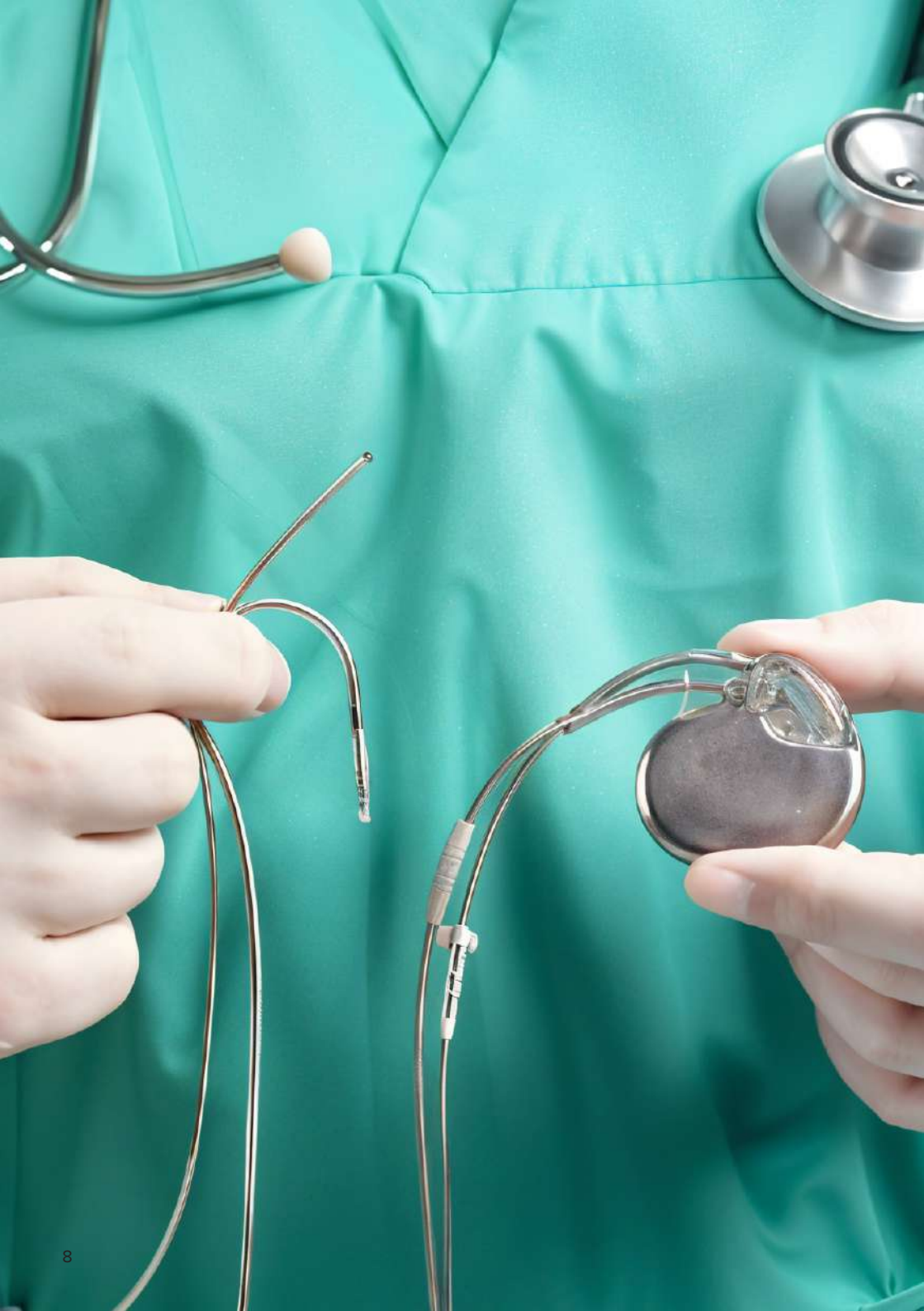
Post Procedure



- You will be monitored in the critical care area for a period to ensure there are no immediate complications.
- Your vital signs and the insertion site will be checked regularly.



- You will be transferred to the normal ward once stable.



04

Take Home Message

After the implantation of a permanent pacemaker, post procedure care is important to ensure a smooth recovery and optimal functioning of the device.

- Keep the incision site clean and dry.
- Avoid applying creams, ointments, or adhesive bandages unless instructed otherwise.
- Limit arm movement on the side of the pacemaker implantation.
- Avoid lifting heavy objects with the arm on the side of the pacemaker implantation.
- Gradually resume normal activities.
- Take prescribed medications as directed, including any antibiotics or pain relievers.
- Attend all scheduled follow-up appointments.
- If you experience any unusual symptoms, contact your doctors promptly.
- Monitoring the pacemaker:
 - Be aware of any alerts or notifications from the pacemaker and report to your doctors promptly.
 - Be cautious around devices that may interfere with the pacemaker, such as those with strong electromagnetic fields.
 - Maintain a safe distance from sources of interference, such as MRI machines and certain electronic devices.
 - Emergency Information: **Always carry your pacemaker identification card!**

Patient's Info



Weight	<input type="text"/>
Height	<input type="text"/>
BMI	<input type="text"/>

Date of Diagnosis ≤ 18 months ≥ 18 months

Treating Cardiologist

Contact No.

Diagnosis & Summary

Patient's Log

Date	Time	Remarks

Optimisation Of Medical Therapies

Clinic Visit Date			
	Drug Regimen (Name, Dose & Frequency)	Drug Regimen (Name, Dose & Frequency)	Drug Regimen (Name, Dose & Frequency)
	Dose: OD/BD/TDS	Dose: OD/BD/TDS	Dose: OD/BD/TDS
	Dose: OD/BD/TDS	Dose: OD/BD/TDS	Dose: OD/BD/TDS
	Dose: OD/BD/TDS	Dose: OD/BD/TDS	Dose: OD/BD/TDS
	Dose: OD/BD/TDS	Dose: OD/BD/TDS	Dose: OD/BD/TDS
	Dose: OD/BD/TDS	Dose: OD/BD/TDS	Dose: OD/BD/TDS
	Dose: OD/BD/TDS	Dose: OD/BD/TDS	Dose: OD/BD/TDS
	Dose: OD/BD/TDS	Dose: OD/BD/TDS	Dose: OD/BD/TDS
	Dose: OD/BD/TDS	Dose: OD/BD/TDS	Dose: OD/BD/TDS

Optimisation Of Medical Therapies

Clinic Visit Date	Drug Regimen (Name, Dose & Frequency)	Drug Regimen (Name, Dose & Frequency)	Drug Regimen (Name, Dose & Frequency)
	Dose: OD/BD/TDS	Dose: OD/BD/TDS	Dose: OD/BD/TDS
	Dose: OD/BD/TDS	Dose: OD/BD/TDS	Dose: OD/BD/TDS
	Dose: OD/BD/TDS	Dose: OD/BD/TDS	Dose: OD/BD/TDS
	Dose: OD/BD/TDS	Dose: OD/BD/TDS	Dose: OD/BD/TDS
	Dose: OD/BD/TDS	Dose: OD/BD/TDS	Dose: OD/BD/TDS
	Dose: OD/BD/TDS	Dose: OD/BD/TDS	Dose: OD/BD/TDS
	Dose: OD/BD/TDS	Dose: OD/BD/TDS	Dose: OD/BD/TDS
	Dose: OD/BD/TDS	Dose: OD/BD/TDS	Dose: OD/BD/TDS
	Dose: OD/BD/TDS	Dose: OD/BD/TDS	Dose: OD/BD/TDS

Notes



Scan me for more information




www.sjmcheartcentre.com

Subang Jaya Medical Centre

Owned by SJP Medical Centres Sdn. Bhd. Registration No. 198901004482 (181788-D) (Formerly known as RSD Hospitals Sdn. Bhd.)
No. 1, Jalan SS 12/1A, 47500 Subang Jaya, Selangor, Malaysia

 24-Hour Careline No.: +603-5639 1212  www.subangjayamedicalcentre.com

 [subangjayamedicalcentre](https://www.facebook.com/subangjayamedicalcentre)  [subangjaya_medicalcentre](https://www.instagram.com/subangjaya_medicalcentre)  [SubangJayaMedicalCentre](https://www.youtube.com/SubangJayaMedicalCentre)  [subangjayamedicalcentre](https://www.spotify.com/subangjayamedicalcentre)